

4X 8-32 Tapped
 ∇ 0.40" +0.08"/-0.00"

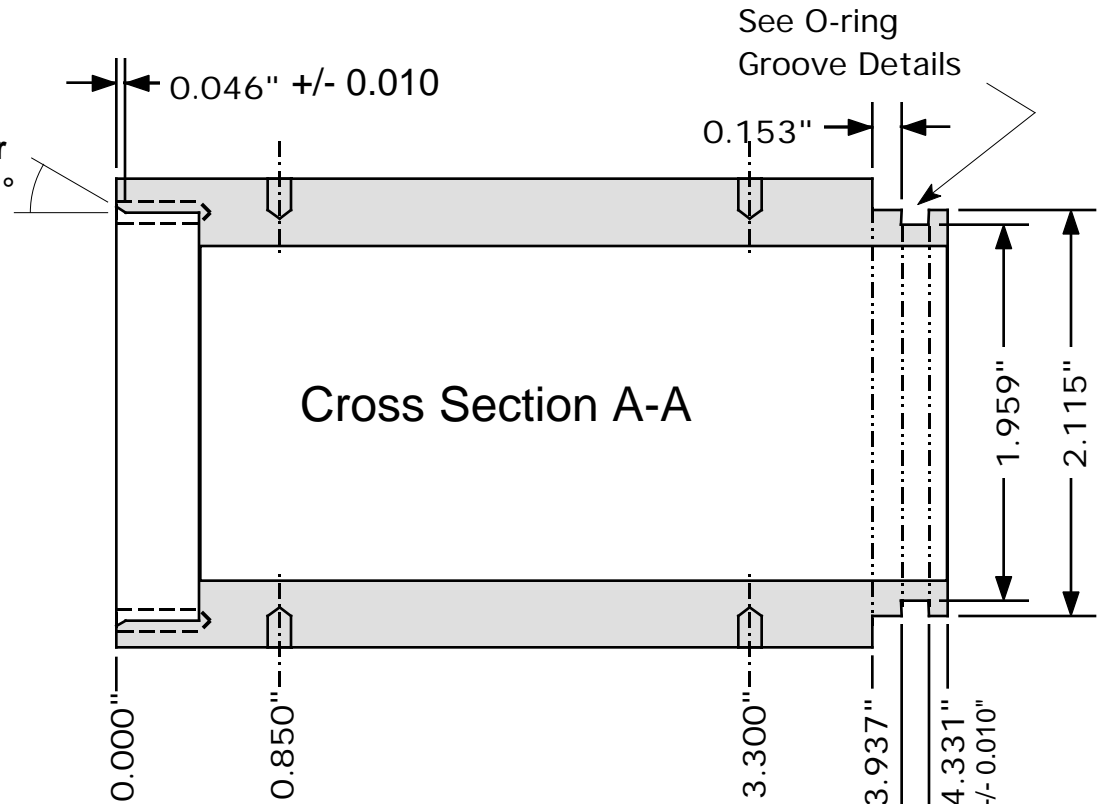
ϕ 1.750" +/- 0.012"
 (Through hole, 1.75" Drill OK)

ϕ 2.121" $\begin{matrix} +0.001 \\ -0.000 \end{matrix}$
 ∇ 0.440" +0.040/-0.000"
 (O-ring sealing surface)

Body Mating Details

By: William K. Warburton
 X-ray Instrumentation Associates
 File: Body Mating Details 010913

Chamfer
 30° +/- 1°



See O-ring
 Groove Details

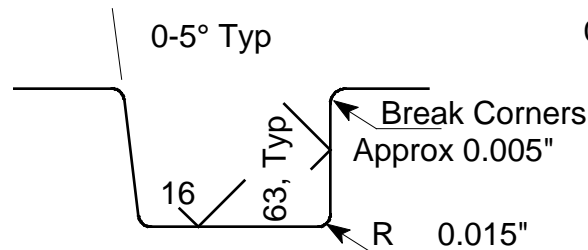
Cross Section A-A

Nominal In-Line Length

0.394" $\begin{matrix} +0.000" \\ -0.010" \end{matrix}$

0.142" +/- 0.002"
 (O-ring Groove)

0.098" +/- 0.010"



O-Ring Groove Details