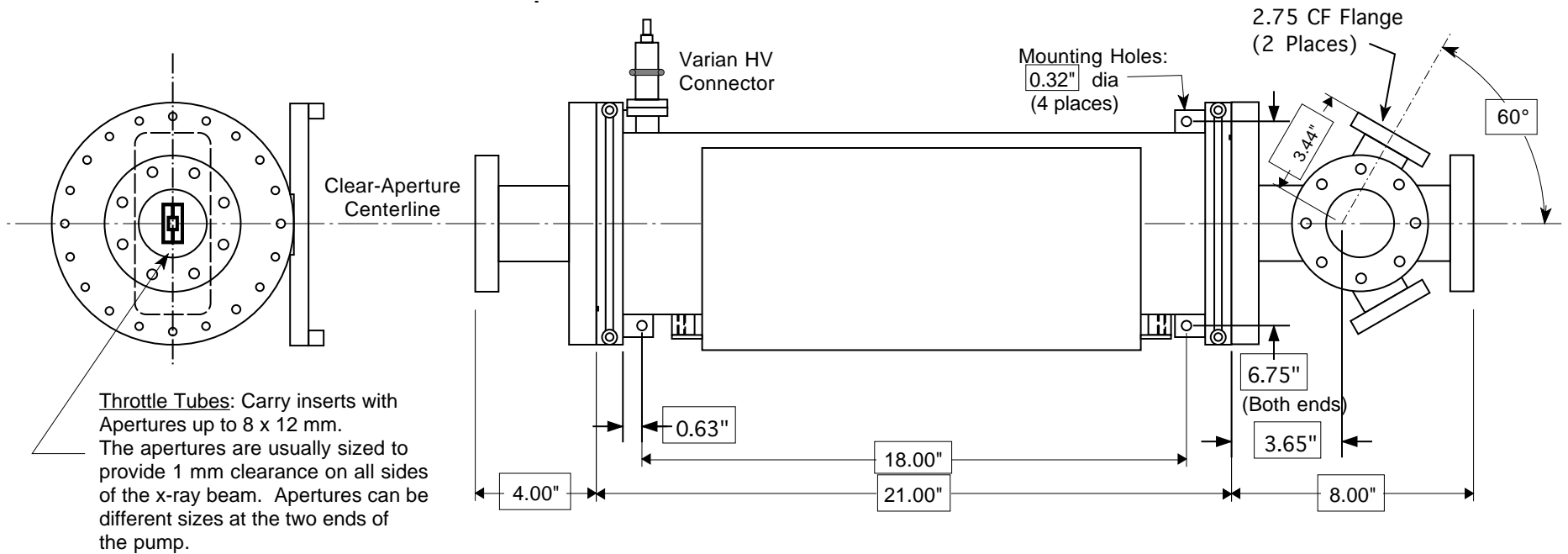


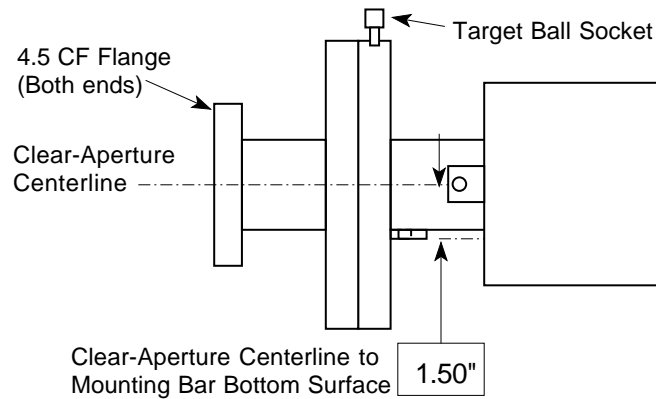
XIA Differential Pump Assembly Sketch

July 1997
by W.K. Warburton



Throttle Tubes: Carry inserts with Apertures up to 8 x 12 mm. The apertures are usually sized to provide 1 mm clearance on all sides of the x-ray beam. Apertures can be different sizes at the two ends of the pump.

Adapter Nipple



Differential Pump & Magnet

Adapter Cross

